

Cool and hip. Cheerful and trendy. Chic and contemporary. Step into the inimitable charm of Citrus Hotel.

Delight yourself in the warmth and smiles of our hotel staff as we seek to provide you with a comfortable and pleasant stay.

Located off Jalan Raja Laut, the 171-room Citrus Hotel enjoys easy access to the city centre. During off-peak hours, KLCC is just 10 minutes' drive away. Given KL's traffic conditions, the rail network provides efficient links to the entire city. Running parallel to the river west of the hotel is the STAR LRT, with stops at PWTC and Sultan Ismail LRT Stations. East of the hotel, the nearby KL Monorail line has stations at Medan Tuanku and Chow Kit.



Hotel Facilities

Furnished for a modern contemporary lifestyle, our refurbished rooms on the executive floors are a statement in innovative charm. Step into our executive rooms and suites where tradition gives way to refreshing minimalist styles of clean lines and bright colours. Additionally, the picture window in our deluxe rooms is none other than a perfect view of the iconic Petronas Twin Towers. Enjoy private check-ins and exclusive use of the Executive Lounge.

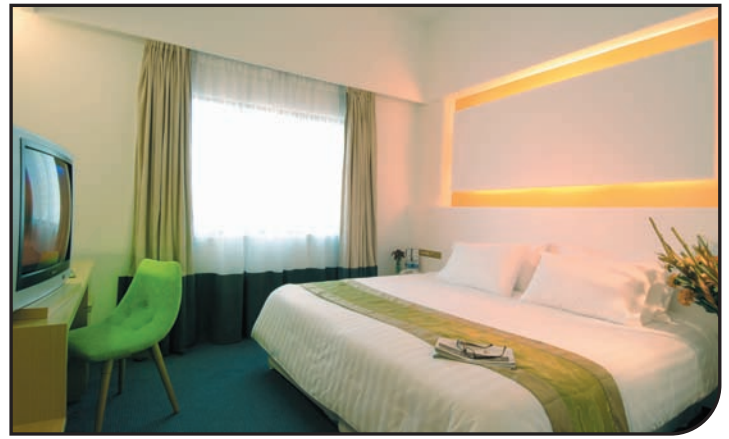
Modern amenities include keycard security, individually controlled air-conditioning, complimentary wireless Internet (for executive rooms and suites), minibar/fridge, personal safe, coffee-making facility, hairdryer and bed size options.

The gym and swimming pool overlook the hills and lush greeneries of Bukit Tunku, a sensory delight and a refreshing change from KL's cityscape.

Banquet

Citrus Hotel provides you with ideal venues for banquets, conferences or executive meetings. We can accommodate up to 200 guests for banquet, 250 for theatre style, and 320 for reception.

Guests requiring a more relaxing venue can use the two conference rooms (up to 30 guests each) located on the swimming pool level. Perfect for informal meetings and gatherings requiring poolside catering overlooking Bukit Tunku.



Amenities

General Amenities

- Keycard locking system
- 25" TV and satellite channels
- Minibar and fridge
- Personal safe
- Coffee-making facility
- Hairdryer

Executive Rooms & Suites

- LCD for suites
- Complimentary Wireless Internet
- Private use of Executive Lounge

Facilities & Services

- Citrus Café
- Banquet
- Business Center & Banquet Sales
- Swimming pool
- Gym
- Laundry services
- Basement car parks

Attractions

A preferred hotel choice for those attending conferences at Putra World Trade Center (PWTC) which is 5 minutes' drive from the hotel. Opposite PWTC is The Mall, a mega shopping complex for conference delegates and locals.

A short walk from the hotel are Wisma Sime Darby, EON Bank Tower and Maju Junction Mall. A 10 minutes' drive or 20 minutes' stroll along Jalan Sultan Ismail will bring you to Suria KLCC, Jalan Bukit Bintang and the Golden Triangle.

Reservations

Please contact the hotel at Tel. (60 3) 9195 9999 or email to enquiry@citrushotelkl.com.

Alternatively, book online at www.compasshospitality.com.